



**SB20 2017 WORLD CHAMPIONSHIP**  
**From 26 August to 2 September 2017**  
**Royal Yacht Squadron**  
**Cowes – England**

## **NOTICE OF RACE**

The Organizing Authority is the Royal Yacht Squadron in conjunction with the SB20 Class World Council.

*The notation '[DP]' in a rule in the Notice of Race means that the penalty for a breach of that rule may, at the discretion of the protest committee, be less than disqualification.*

### **1. RULES**

- 1.1** The regatta will be governed by the rules as defined in *The Racing Rules of Sailing*.
- 1.2** The national authority prescriptions will apply. The relevant prescriptions are stated in full on Attachment C of this Notice of Race (NoR).
- 1.3** The byelaws for the Port of Southampton, Portsmouth Harbour and Cowes Harbour will apply.
- 1.4** Under RRS 87, the class rules are changed as follows:
  - C4.2 Mobile telephones and handheld GPS may be carried on board, but not to be used when racing.
  - C5.1 See Attachment D.
- 1.5** Appendix P of the rules will apply, with P2.1 applying to all penalties, changed to one-turn only. Delete P2.2 and P2.3.
- 1.6** The sailing instructions will consist of the instructions in RRS Appendix S Standard Sailing Instructions, and supplementary sailing instructions that will be published on the event website no later than 0900 on 26 August 2017 and on the official notice board.

### **2. ADDITIONAL IDENTIFICATION AND ADVERTISING**

- 2.1** Boats shall display advertising supplied by the Organizing Authority. If this rule is broken, World Sailing Regulation 20.9.2 applies. [DP]
- 2.2** Boats may be required to display bow identification numbers. [DP]

### **3. ELIGIBILITY AND ENTRY**

- 3.1** The regatta is open to all boats of the SB20 Class.
- 3.2** Eligible boats may enter by completing the online entry form at [www.rys.org.uk](http://www.rys.org.uk) or the standard entry form attached to this NoR, and paying the required fee of £525 GBP, by 1 June 2017. Entries will not be confirmed until full payment is received and the National Association or World Council has confirmed paid membership.
- 3.3** Late entries may be accepted after the entry closing date only at the discretion of the Organizing Authority. In case of acceptance the late entry fee will be £625 GBP.

- 3.4 Photo identification is required for all crew members (Passport or Driving Licence will generally be accepted).

## 4 FEES

- 4.1 The entry fee is £525 per boat. The entry fee includes:

- Launching and haul-out at Hamble Point Marina, available on the dates specified in the Schedule.
- Parking for one SB20 trailer and one car at Hamble Point Marina between 25 August and 2 September.
- Marina berthing at Cowes Yacht Haven from midday on 25 August to midday on 2 September.
- Invitations to a minimum of two social events for skipper and crew.
- SB20 World Council event levy.
- Note – there may be a class dinner during the event that may incur an additional charge.

- 4.2 There are no facilities provided for support boats, including coach boats.

- 4.3 No fees are refundable after the entry closing date. Before that date entry fees can be refunded after deducting 50% for administration expenses.

- 4.4 Resale of entries is not permitted.

## 5 QUALIFYING SERIES AND FINAL SERIES

If the fleet is over 80 boats, the regatta will consist of a qualifying series and a final series. If the fleet is 80 boats or less, the regatta will consist of a single series.

## 6 SCHEDULE

### 6.1

Date	Time	Event
Friday 25 August	1200 to 1700	Craning in and measurement at Hamble Point
Saturday 26 August	0900 to 1700	Craning in at Hamble Point
	0900 to 1800	Registration and Measurements
Sunday 27 August	0900 to 1200	Craning in at Hamble Point
	0900 to 1800	Registration and Measurements
	1430 warning	Practice Race
	Immediately after	Sprint to the Bar – The Cannon Race
	1800	Boats must be afloat in CYH Marina
	1930	Opening Ceremony
Monday 28 August	1100 warning	Racing – 3 Races Planned
Tuesday 29 August	1200 warning	Racing – 2 Races Planned
Wednesday 30 August	1100 warning	Racing – 3 Races Planned
Thursday 31 August	1200 warning	Racing – 2 Races Planned
Friday 1 September	1100 warning	Racing – 2 Races Planned
	1900	Prize-giving event
Saturday 2 September	0900 to 1700	Craning out at Hamble Point

- 6.2 A total of 12 Races are scheduled, with no more than 4 races per day.

**6.3** On the last scheduled day no warning signal will be made after 1530.

## **7 MEASUREMENT**

**7.1** All boats and equipment shall be presented for measurement where the following measurements will be taken:

- a) Crew weighing according to the SB20 Class Measurement Rules. For this item the full crew shall be presented at the same time.
- b) Safety and Equipment checks.
- c) Boats should be prepared for full inspection, including hull weight control.

**7.2** Random measurement and safety equipment checks may be made during the Regatta at the discretion of the Measurement Committee. [DP]

## **8 SAILING INSTRUCTIONS**

The sailing instructions will be available no later than 0900h on the first day of registration at the Race Office.

## **9 VENUE**

**9.1** Attachment A shows the location of the regatta harbour.

**9.2** Attachment B shows the location of the racing areas.

## **10 THE COURSES**

The courses to be sailed will be:

**10.1** Windward – Leeward with spreader mark to windward and downwind gate in the case of a single fleet series.

**10.2** Inner Loop and Outer Loop with downwind gate in case of multi fleets series.

## **11 PENALTY SYSTEM**

**11.1** For the SB20 class, RRS 44.1 is changed so that the Two-Turns Penalty is replaced by the One-Turn Penalty.

**11.2** Decisions of the international jury will be final as provided in rule 70.5.

**11.3** Members of the international jury may be on the water during racing. In addition to implementing Appendix P, the jury will be observing at potential conflict areas (start line, windward mark, leeward gate etc), in order to be able to act as witness if a protest is submitted. The jury will not be on-water umpiring.

## **12 SCORING**

**12.1** 3 races are required to be completed to constitute a series.

**12.2** (a) When fewer than five races have been completed, a boat's series score will be the total of her race scores.

(b) Where from five to nine races have been completed, a boat's series score will be the total of her race scores excluding her worst score.

(c) Where ten or more races have been completed, a boat's series score will be the total of her race scores excluding her two worst scores.

## **13 SUPPORT BOATS**

- 13.1** Support boats are required to register at the race office and complete the Support Boat Entry Form and have to be marked with a country flag of a minimum size of 50cmx70cm.
- 13.2** Support boats are expected to render assistance to any boat in danger when requested by the boat, or at the request of the race committee or international jury.
- 13.3** Team leaders, coaches and other support personnel shall stay 100 metres outside areas where boats are racing from the time of the Warning Signal until all boats have finished racing.
- 13.4** A yacht shall receive no outside assistance from support boats or support persons or otherwise once she has left the dock for the day until the finish of the last race of the day, except in the case of emergency and/or towing where the Race Officer has communicated to the fleet that all competitors may accept a tow. For the avoidance of doubt, outside assistance includes verbal communication and the transfer of physical items.
- 13.5** At all times, support boats must be on call on VHF channel 77.
- 13.6** Penalties for breaking rule 13 will be at the discretion of the international jury up to and including disqualification of all boats associated with the team or private support boat. [DP]

## **14 BERTHING**

Boats shall be kept in their assigned places while they are in the harbour. Allocation of moorings will be at the sole discretion of the Organizing Authority.

## **15 HAUL-OUT RESTRICTIONS**

All boats shall be afloat before 1800 on the last day of registration and shall not be hauled out during the regatta except with and according to the terms of prior written permission of the race committee or under the requirement of the Measurers.

## **16 DIVING EQUIPMENT AND PLASTIC POOLS**

Underwater breathing apparatus and plastic pools or their equivalent shall not be used around boats between the preparatory signal of the first race and the end of the regatta.

## **17 RADIO COMMUNICATION**

- 17.1** Except in an emergency, a boat that is racing shall not make voice or data transmissions and shall not receive voice or data communication that is not available to all boats. This restriction also applies to mobile telephones [DP].
- 17.2** The race committee may broadcast information available to all competitors by radio on VHF International Channel 05, including starting and safety information. Boats shall not transmit on VHF Channel 05. Boats wishing to communicate with the Race Committee shall do so on VHF Channel 77.

## **18 PRIZES**

- 18.1** Prizes will be given to the top three boats of the overall results and for the 1st Women team and 1st Youth team and the 1st Masters Team. Additional prizes may be awarded.
- 18.2** A Women's team is composed of a minimum of 50% women, including one at the helm (implies a minimum of 2 women on board).
- 18.3** Youth team is composed of a minimum of 50% of crew 25 years old or younger and the helmsman must be 25 years old or younger.
- 18.4** For the Masters team the helmsman must be 50 years old or older and the average age of the crew must be 50 years old or older.
- 18.5** The Nations Cup is awarded to the nation (country represented by the sailing teams racing under these countries letters) with the lowest score of their first 3 teams. To qualify, a Nation must have at least 3 teams. The lowest score is calculated by

summing the final scoring place of each of the top three teams from each qualified nation.

## **19 RISK STATEMENT**

Rule 4 of the Racing Rules of Sailing states: “The responsibility for a boat’s decision to participate in a race or to continue racing is hers alone.” Sailing is by its nature an unpredictable sport and therefore inherently involves an element of risk. By taking part in the event, each competitor acknowledges that:

- a) They are aware of the inherent element of risk involved in the sport and accept responsibility for the exposure of themselves, their crew and their boat to such inherent risk whilst taking part in the event;
- b) They are responsible for the safety of themselves, their crew, their boat and their other property whether afloat or ashore;
- c) They accept responsibility for any injury, damage or loss to the extent caused by their own actions or omissions;
- d) Their boat is in good order, equipped to sail in the event and they are fit to participate;
- e) The provision of a race management team, patrol boats, umpires and other officials and volunteers by the organiser does not relieve them of their own responsibilities;
- f) The provision of patrol boat cover is limited to such assistance, particularly in extreme weather conditions, as can be practically provided in the circumstances;
- g) It is their responsibility to familiarise themselves with any risks specific to this venue or this event drawn to their attention in any rules and information produced for the venue or event and to attend any safety briefing held for the event.

## **20 INSURANCE**

Each participating boat shall be insured with valid third-party liability insurance with a minimum cover of £3,000,0000 (three million GBP) per incident or the equivalent.

## **21 FURTHER INFORMATION**

For further information please contact:

Royal Yacht Squadron Office

The Castle

Cowes

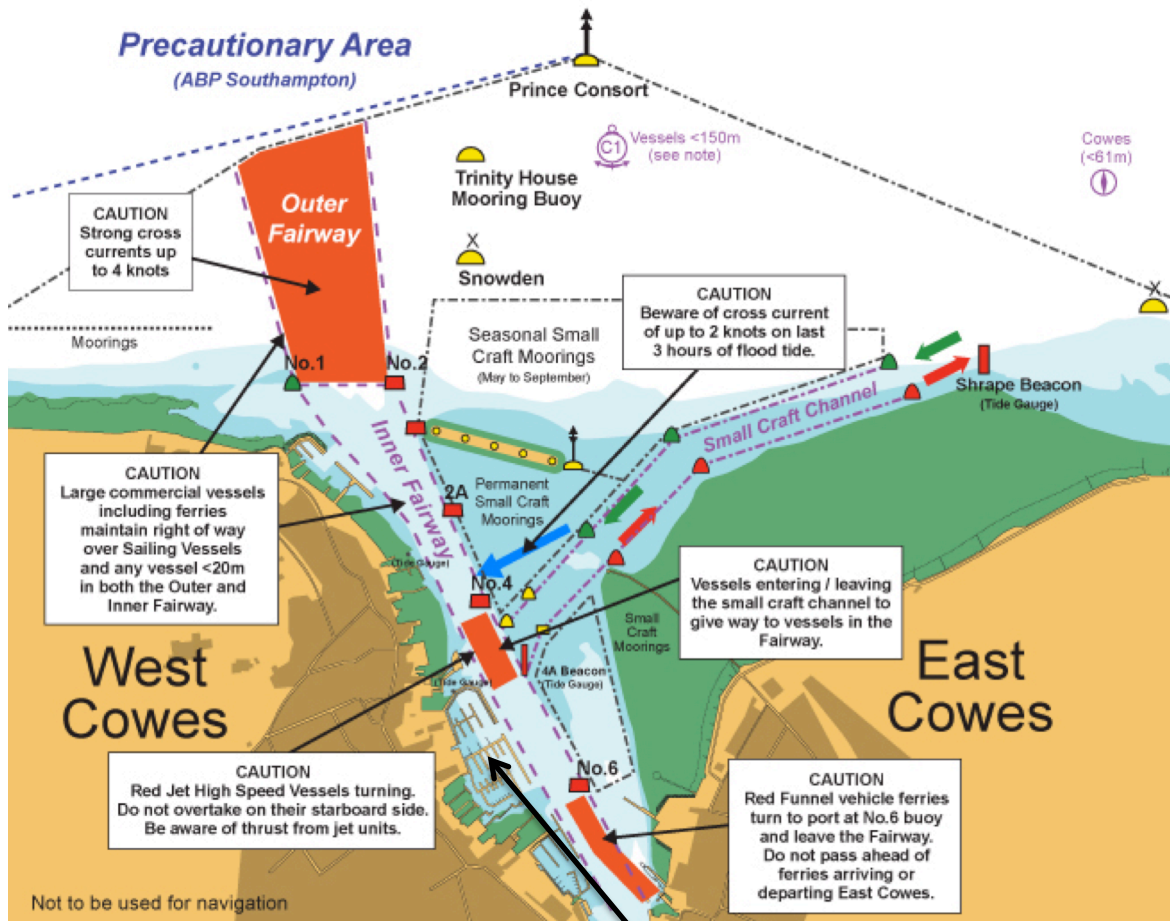
Isle of Wight

PO31 7QT, UK

Email: [mail@rys.org.uk](mailto:mail@rys.org.uk)

# ATTACHMENT A

## Regatta Harbour – Cowes Yacht Haven and Cowes Harbour



Cowes Yacht Haven

Cowes Harbour.

Further information may be found at:

<http://www.cowesharbourcommission.co.uk>

Port of Southampton

Further information may be found at:

[http://www.southamptonvts.co.uk/admin/content/files/PDF\\_Downloads/Yachtsmans-guide-LowRes.pdf](http://www.southamptonvts.co.uk/admin/content/files/PDF_Downloads/Yachtsmans-guide-LowRes.pdf)

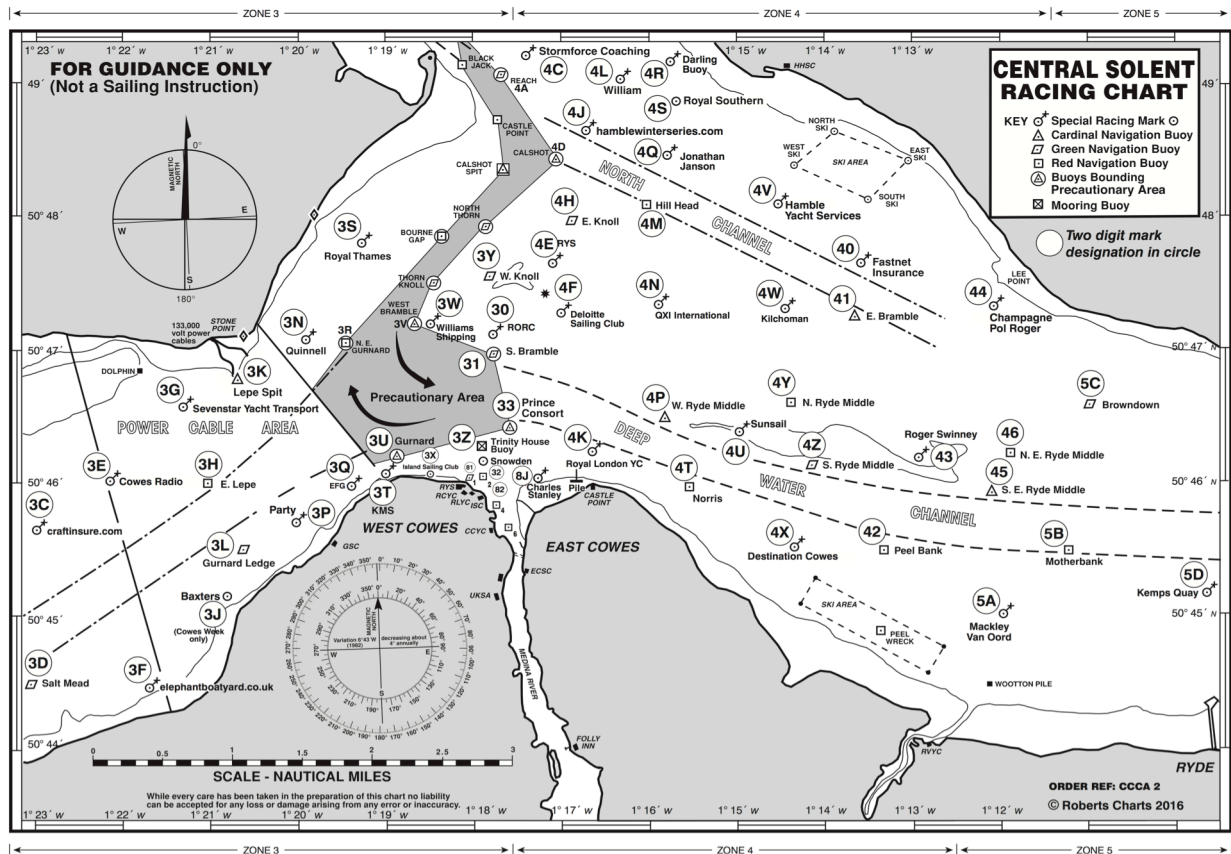
Portsmouth Harbour:

Further information may be found at:

<http://www.royalnavy.mod.uk/qhm/portsmouth/regulations>

# ATTACHMENT B

## RACING AREAS



## ATTACHMENT C

### Prescriptions of the RYA

**Rule 3 Acceptance of the Rules**

Add new rule 3.6: 'Each competitor and boat owner shall ensure that their *support persons* comply with the *rules*.

**Rule 5 Anti-Doping**

The national authority procedural rules required by World Sailing regulation 21.16 to implement the World Anti-Doping Code through World Sailing Regulation 21 are the **RYA Anti-Doping Rules**, as published on the RYA website.

**Rule 67 Damages**

1. Any issue of liability or claim for damages arising from an incident while a boat is bound by *The Racing Rules of Sailing* shall be subject to the jurisdiction of the courts and not considered by a protest committee.
2. A boat that takes a penalty or retires does not hereby admit liability for damages or that she has broken a *rule*.



## ATTACHMENT D

# SAFETY EQUIPMENT

The present attachment D deletes entirely the SB20 Class Rule article C.5.1 (Mandatory Equipment) and replaces this deleted article with the Safety Equipment listed below.

The following safety equipment shall be carried at all times:

- a) 2 paddles of combined minimum weight not less than 1 kg.
- b) First aid kit in waterproof container
- c) A floating tow line of minimum diameter 8mm and minimum length 25m. Aramid fibre lines or lines of other material with minimal stretch may not be used
- d) Bucket and minimum 2m lanyard
- e) Sharp knife located in cockpit
- f) Basic tools (Leatherman or similar multi-tool is accepted as meeting this requirement)