

SB20 WORLD CHAMPIONSHIP

26 AUGUST – 2 SEPTEMBER 2017
ROYAL YACHT SQUADRON
COWES

ORGANISING AUTHORITY:
ROYAL YACHT SQUADRON

SAILING INSTRUCTIONS

The notation '[DP]' in a rule in the Sailing Instructions means that the penalty for a breach of that rule may, at the discretion of the Protest Committee, be less than disqualification.

1. RULES

- 1.1 Racing will be governed by the Rules as defined in The Racing Rules of Sailing (RRS) 2017-2020.
- 1.2 The National Authority (RYA) Prescriptions that apply are noted in Attachment C in the Notice of Race.
- 1.3 Under RRS 87, the class rules are changed as follows:
 - (a) C4.2 Mobile telephones and handheld GPS may be carried on board, but not to be used when racing.
 - (b) C5.1 See Attachment D in the Notice of Race.
- 1.4 In case of conflict the Sailing Instructions will prevail over the Notice of Race. This changes RRS 63.7.
- 1.5 The byelaws for the Port of Southampton, Portsmouth Harbour and Cowes Harbour will apply. [DP]

2. ADDITIONAL IDENTIFICATION

- 2.1 While racing, boats shall display bow numbers. The organising authority will supply the numbers and instructions for their use. [DP]
- 2.2 Each day while racing, the first, second and third boats in series ranking shall display a yellow, blue and red sticker respectively. The organising authority will supply the stickers and instructions for their use. [DP]

3. NOTICES TO COMPETITORS

- 3.1 The Race Office will be located in the Royal Yacht Squadron (RYS). The Official Notice Board (ONB) will be located at Cowes Yacht Haven and a duplicate ONB will be displayed on the event website at www.sb20worlds.co.uk

4. CHANGES TO SAILING INSTRUCTIONS

- 4.1 Any change to the Sailing Instructions (SIs) made ashore will be posted no later than two hours before the first

scheduled warning signal on the day it will take effect, except that any change to the schedule of races will be posted by 2000 on the day before it will take effect.

5. SIGNALS MADE ASHORE

- 5.1 Signals made ashore will be displayed at the Cowes Yacht Haven Flagstaff.
- 5.2 Flag AP displayed ashore means that departure from Cowes Yacht Haven is postponed and will start after AP is removed and Flag D is displayed. This changes Race Signals AP.
- 5.3 Flag D with one sound means that competitors may depart from Cowes Yacht Haven. The first warning signal will not be made until boats that depart promptly have had the opportunity to sail directly to the race area.
- 5.4 Flag T displayed with Flag D means that towing is available by official boats only, from Cowes to the race area.

6. SIGNALS MADE AFLOAT

- 6.1 To alert boats that a race or sequence of races will begin soon, an orange flag will be displayed on the Committee Vessel with multiple sound signals at least five minutes before a warning signal is displayed.

7. SCHEDULE OF RACES

Date	Event	Time of 1 st Warning Signal
Sunday 27 August HW Portsmouth BST 0344 - 4.4m 1614 - 4.5m	Practice Race	1430
	Cannon Race	ASAP after Practice Race
Monday 28 August HW Portsmouth BST 0426 - 4.2m 1650 - 4.3m	Race 1	1100
	Race 2	ASAP after Race 1
	Race 3	ASAP after Race 2
Tuesday 29 August HW Portsmouth BST 0507 - 4.0m 1729 - 4.1m	Race 4	1200
	Race 5	ASAP after Race 4
Wednesday 30 August HW Portsmouth BST 0555 - 3.8m 1818 - 3.8m	Race 6	1100
	Race 7	ASAP after Race 6
	Race 8	ASAP after Race 7
Thursday 31 August HW Portsmouth BST 0718 - 3.6m 1948 - 3.7m	Race 9	1200
	Race 10	ASAP after Race 9
Friday 1 September HW Portsmouth BST 0853 - 3.7m 2115 - 3.8m	Race 11	1100
	Race 12	ASAP after Race 11

- 7.1 Times shown in these Sailing Instructions are British Summer Time (BST) = UT + 1hr.
- 7.2 Races not completed on a scheduled day will be run on the next available day.
- 7.3 One additional race may be sailed on any day at the discretion of the organising authority, provided that the

event does not become more than one race ahead of schedule.

- 7.4 The Race Committee will not run more than four races on any day.
- 7.5 On the last day of racing, no warning signal will be made after 1530.

8. CLASS AND FLEET FLAGS

- 8.1 The class flag will be a white flag with the class logo.
- 8.2 The warning signals in the qualifying series will be a yellow flag for the Yellow Fleet and blue flag for the Blue Fleet. This changes RRS 26.
- 8.3 The warning signals in the final series will be a yellow flag for the Gold Fleet and blue flag for the Silver Fleet. This changes RRS 26.
- 8.4 The organising authority will provide each boat with a yellow and blue ribbon. All boats in the yellow and gold fleets shall display a yellow ribbon from the backstay of their boats and all boats in the blue or silver fleets shall display a blue ribbon from the backstay of their boats. [DP]

9. REGATTA FORMAT

- 9.1 For details of the practice race and Cannon Race, see Addendum D.
- 9.2 The event will consist of a qualifying series and a final series.
- 9.3 For the first day of the qualifying series, boats will be assigned into fleets of as equal size and ability as possible. Initial assignment will be made by the organising authority and will be posted by 1900 on Sunday 27 August.
- 9.4 For subsequent qualifying series racing days, boats will be reassigned to fleets, based on the rankings available at 2100 on the previous day, regardless of protests or requests for redress not yet decided. Fleet assignments will be posted by 0800 on each qualifying series racing day.
- 9.5 Assignments will be made as follows:

Rank in series	Fleet assignment
1	Yellow
2	Blue
3	Blue
4	Yellow
5	Yellow
6	Blue
And so on	

- 9.6 If two or more boats have the same rank, they will be entered in the left column in the order yellow then blue.
- 9.7 If all fleets have not completed the same number of races at the end of a qualifying series day, the series score for reassignment will be calculated for those races completed by all fleets, numbered in order of completion.
- 9.8 If the qualifying series fleets have not completed the same number of races by the end of a day, the fleet with fewer races will continue racing on the following day until

all fleets have completed the same number of races. All boats will thereafter race in the new fleets.

- 9.9 The qualifying series will be completed at the end of the day on which a fifth qualifying race has been completed by both yellow and blue fleets. If at the end of the qualifying series one fleet has more race scores than the other, scores for the most recent race(s) will be excluded so that all boats in the qualifying series have the same number of race scores.
- 9.10 The final series will start on the day after completion of the qualifying series.
- 9.11 Boats will be assigned to two final-series fleets on the basis of their ranks in the qualifying series at 2100 on the day on which the qualifying series was completed. Boats with the best qualifying series ranks will race in the Gold fleet, and the other boats will race in the Silver fleet. The two fleets will be of, as nearly as possible, equal size and the Silver fleet shall not be larger than the Gold fleet. Fleet assignments will be posted by 0800 on the first day of final series racing.
- 9.12 Any recalculation of qualifying series ranking after boats have been assigned to final series fleets will not affect the assignments except that a redress decision may promote a boat to the Gold fleet.
- 9.13 Gold and Silver final series fleets will be scored separately and need not have completed the same number of final series races.

10. RACING AREA

- 10.1 Racing will take place from a Committee Vessel expected to be in the area of mark 'Hill Head' in the central Solent. The approximate location of the Committee Vessel will be announced on **VHF CH 05** at least 30 minutes before the first Warning Signal on each day of racing.

11. COURSES

- 11.1 The course for each race will be outer trapezoid for the first fleet to start, and windward/leeward for the second fleet to start.
- 11.2 The diagrams in Addendum A of these Sailing Instructions show the courses, including the approximate angles between legs, the order in which the marks are to be passed, and the side on which each mark is to be left.
- 11.3 If only one mark is present at a leeward gate, it shall be rounded to port.
- 11.4 The course to be sailed will be designated by displaying the course letter and number from the Committee Vessel no later than the Warning Signal.
- 11.5 No later than the Warning Signal, the Committee Vessel will also display the approximate compass bearing from the middle of the Starting Line to Mark 1.

12. NAVIGATION RESTRICTIONS

- 12.1 Boats shall not anchor or kedge in the Cowes Harbour fairway.
- 12.2 All boats shall comply with Associated British Ports Notice to Mariners No 3 of 2016 giving details of a Precautionary Area and Moving Prohibited Zone (MPZ). The MPZ shall

rank as an obstruction for the purposes of RRS 19 and 20. See Addendum E for further information.

- 12.3 Competitors shall be aware of the Caution notes on the diagram of the Cowes Precautionary Area (see Addendum C). [DP]

13. MARKS

- 13.1 With reference to Addendum A, marks 1, 1a, 2, 3p, 3s, 4s & 4p will be orange inflatable marks.
- 13.2 The starboard end starting mark will be a committee vessel. The port end starting mark will be a committee vessel or an orange inflatable mark.
- 13.3 The finishing marks will be a committee vessel and a black inflatable mark.

14. THE START

- 14.1 The starting line will be between a staff displaying an orange flag on the Committee Vessel at the starboard end and a staff displaying an orange flag on the Pin End Committee Vessel or the course side of the port-end starting mark.
- 14.2 A boat starting later than 4 minutes after her starting signal will be scored DNS without a hearing. This changes RRS A4 and A5.

15. RECALLS

- 15.1 The Race Committee may broadcast the bow numbers of individually recalled boats on VHF CH 05 after Flag X has been displayed, but not sooner than 30 seconds after the start. Delay or failure to do so is not grounds for redress.
- 15.2 When a race started under RRS 30.4 (Black Flag rule) is recalled or abandoned, the bow numbers of disqualified boats will be displayed on the committee signal vessel, with multiple sound signals, for at least three minutes. This changes RRS 30.4.

16. CHANGE OF THE NEXT LEG OF THE COURSE

- 16.1 To change the next leg of the course, the Race Committee will move the original mark (or the finishing line) to a new position.
- 16.2 The position of any mark(s) may be adjusted by up to plus or minus 10 degrees relative to previous location and up to approximately 200 metres to windward or leeward without signalling Flag C, a direction signal, a length signal or a sound signal. This changes RRS 33.

17. THE FINISH

- 17.1 The finish line will be between a staff displaying a blue flag on a Committee Vessel and the course side of the finish mark.

18. PENALTY SYSTEM

- 18.1 Rule 44.1 is changed so that the Two-Turns Penalty is replaced by the One-Turn Penalty.
- 18.2 Appendix P will apply, with P2.1 applying to all penalties, changed to a One-Turn Penalty only. Delete P2.2 and P2.3.

19. TIME LIMITS

- 19.1 The target time for a race is 55-60 minutes.
- 19.2 The following time limits, will apply.
- (a) Mark 1 Time Limit. The time limit for the first boat to pass Mark 1 is 30 minutes.
 - (b) Race Time Limit. The time limit for the first boat to sail the course and finish is 90 minutes.
 - (c) Finishing Window. The time limit for boats to finish after the first boat sails the course and finishes is 20 minutes.
- 19.3 If no boat has passed Mark 1 within the Mark 1 Time Limit, or if no boat has finished within the Race Time Limit, the race will be abandoned.
- 19.4 Boats failing to finish within the Finishing Window shall be scored Did Not Finish without a hearing. This changes RRS 35, A4 and A5.

20. PROTESTS AND REQUESTS FOR REDRESS

- 20.1 A boat intending to protest shall inform the race committee finish vessel immediately after finishing. If the protestor does not finish the race he shall promptly inform the Race Committee Vessel as soon as possible or the Race Officer immediately after arriving ashore.
- 20.2 Protest forms are available at the Race Office. Protest and requests for redress or reopening shall be delivered to the Race Office within the protest time limit. Contact mobile phone numbers shall be included on the protest form.
- 20.3 The protest time limit is 90 minutes after the last boat has finished the last race of the day or the Race Committee signals no more racing today, whichever is later.
- 20.4 Notices will be posted no later than 30 minutes after the protest time limit to inform competitors of the hearings in which they are parties or named as witnesses. Hearings will be held in the protest room located at the RYS.
- 20.5 Notices of Protests by the Race Committee, Technical Committee or Protest Committee will be posted to inform boats under RRS 61.1(B). A list of boats who have been penalized according to Appendix P for breaking RRS 42 will be posted within the protest time limit.
- 20.6 Before the start of a hearing an opportunity will be given, after reading the protest, for an alternative penalty of 10% of the number of entries in the championships, rounded to the nearest whole number and added to their finishing position, to be taken by any of the parties. This will only apply in cases where there has been no damage, injury or significant advantage gained. The final score cannot be worse than the points for DSQ. This changes RRS 63.1.
- 20.7 On the last scheduled day of racing a request for redress based on a protest committee decision shall be delivered no later than 30 minutes after the decision was posted. This changes RRS 62.2.

21. SCORING

- 21.1 Four completed races are required to constitute a championship.
- 21.2 The total score for each boat will be the sum of her scores as follows:

Qualifying series

Fewer than four completed races – all her race scores.

Four or more completed races – all scores except her worst race score.

Final series

Fewer than four completed final series races – her qualifying series score plus all her final series race scores.

Four or more completed final series races – her qualifying series score plus all her final series scores except her worst final series race score.

For final series, boats assigned to the Gold fleet will be ranked higher in the regatta than boats assigned to the Silver fleet.

- 21.3 For the qualifying series, RRS A4.2 is changed so that those scores are based on the number of boats assigned to the largest fleet.
- 21.4 To request correction of an alleged error in posted race or series results, a boat may complete a scoring enquiry form available at the Race Office. A scoring enquiry may be regarded as a request for redress.

22. SAFETY REGULATIONS

- 22.1 All boats shall sail past the Committee Signal Vessel on starboard tack and hail their bow number prior to start of the first race each day. *[DP]*
- 22.2 A boat that retires from a race shall notify the Race Committee as soon as possible on VHF CH 77 or by hailing a race committee vessel. *[DP]*

23. REPLACEMENT OF CREW OR EQUIPMENT

- 23.1 Substitution of competitors will not be allowed without prior written approval of the Race Committee and are at the discretion of the Race Committee. Requests for substitution shall be made in writing to the Race Committee at the first reasonable opportunity. *[DP]*
- 23.2 Substitution of damaged or lost equipment will not be allowed unless authorized by the Race Committee. Requests for substitution shall be made in writing to the committee at the first reasonable opportunity. *[DP]*

24. EQUIPMENT AND MEASUREMENT CHECKS

- 24.1 A boat or equipment may be inspected at any time for compliance with the Class Rules and SIs.
- 24.2 On the water, a boat may be instructed by the Race Committee to proceed immediately to a designated area for inspection.

25. SUPPORT VESSELS *[DP]*

- 25.1 Support vessels are required to register at the race office and complete the Support Vessel Entry Form and shall be marked with a country flag of a minimum size of 50cmx70cm, supplied by the support vessel.
- 25.2 Support vessels must be on call on VHF channel 77 at all times during racing. They are expected to render assistance to any boat in danger when requested by the boat, or at the request of the Race Committee or jury.

- 25.3 Except when complying with rule 25.2, support vessels and personnel shall stay 100 metres outside the course area from the time of the first Warning Signal until all boats have finished racing. The course area is the area inside an imaginary line drawn 100 metres outside any area where a boat might sail whilst racing.

- 25.4 A boat shall receive no outside assistance from support vessels or support persons or otherwise once she has left the dock for the day until the finish of the last race of the day, except in the case of emergency and/or towing supplied by the organizer and available to all participants. For the avoidance of doubt, outside assistance includes verbal communication and the transfer of physical items.

- 25.5 Penalties for breaking SI 25 will be at the discretion of the jury up to and including disqualification from one or more races for all boats associated with the support vessel.

26. TRASH DISPOSAL

- 26.1 Trash may be placed aboard support or official boats.

27. HAUL OUT RESTRICTIONS

- 27.1 Boats shall not be hauled out during the event except with and in accordance to the terms of the prior written permission of the Race Committee. *[DP]*

28. DIVING EQUIPMENT AND PLASTIC POOLS

- 28.1 Underwater breathing apparatus and plastic pools or their equivalent shall not be used around competing boats between the warning signal of the first race and the end of the Regatta. *[DP]*

29. RADIO COMMUNICATIONS

- 29.1 The Race Committee may broadcast information available to all competitors by radio on VHF Channel 05, including starting and safety information. Boats shall not transmit on VHF Channel 05.
- 29.2 Competitors wishing to communicate with the Race Committee shall do so on VHF Channel 77.
- 29.3 Except in an emergency, a boat shall neither make radio transmissions while racing nor receive radio communications not available to all boats. This restriction applies to all communication devices. *[DP]*

30. PRIZES

- 30.1 Prizes will be awarded in accordance with the Notice of Race.

31. RISK STATEMENT

- 31.1 Rule 4 of the Racing Rules of Sailing states: "The responsibility for a boat's decision to participate in a race or to continue racing is hers alone."
- 31.2 Sailing is by its nature an unpredictable sport and therefore involves an element of risk. By taking part in the event, each competitor agrees and acknowledges that:

- (a) They are aware of the inherent element of risk involved in the sport and accept responsibility for the

exposure of themselves, their crew and their boat to such inherent risk whilst taking part in the event;

- (b) They are responsible for the safety of themselves, their crew, their boat and their other property whether afloat or ashore;
- (c) They accept responsibility for any injury, damage or loss to the extent caused by their own actions or omissions;
- (d) Their boat is in good order, equipped to sail in the event and they are fit to participate;
- (e) The provision of a race management team, patrol boats, and other officials and volunteers by the event organiser does not relieve them of their own responsibilities;
- (f) The provision of patrol boat cover is limited to such assistance, particularly in extreme weather conditions, as can be practically provided in the circumstances;
- (g) It is their responsibility to familiarise themselves with any risks specific to this venue or this event drawn to their attention in any rules and information produced for the venue or event and to attend any safety briefing held for the event;
- (h) They are responsible for ensuring that their boat is equipped and seaworthy so as to be able to face extremes of weather; that there is a crew sufficient in number, experience and fitness to withstand such weather; and that the safety equipment is properly maintained, stowed and in date and is familiar to the crew.

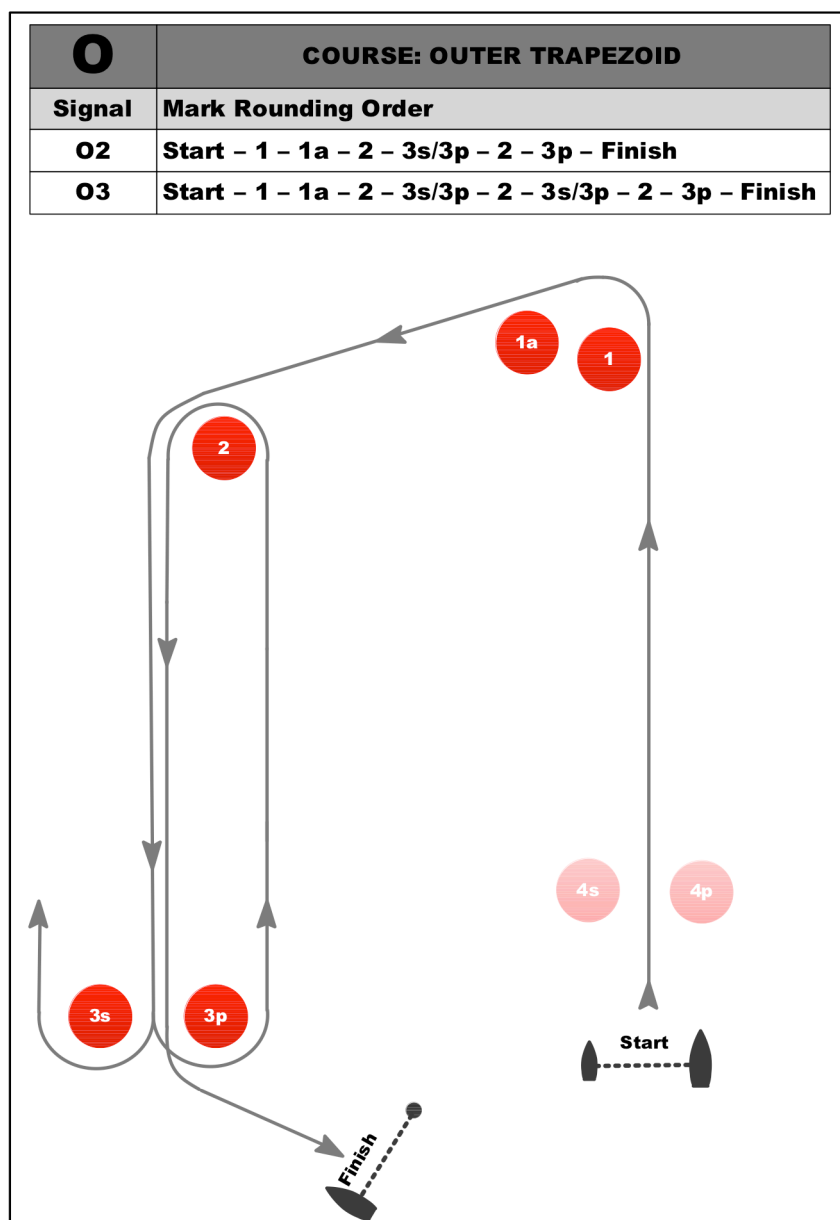
32. INSURANCE

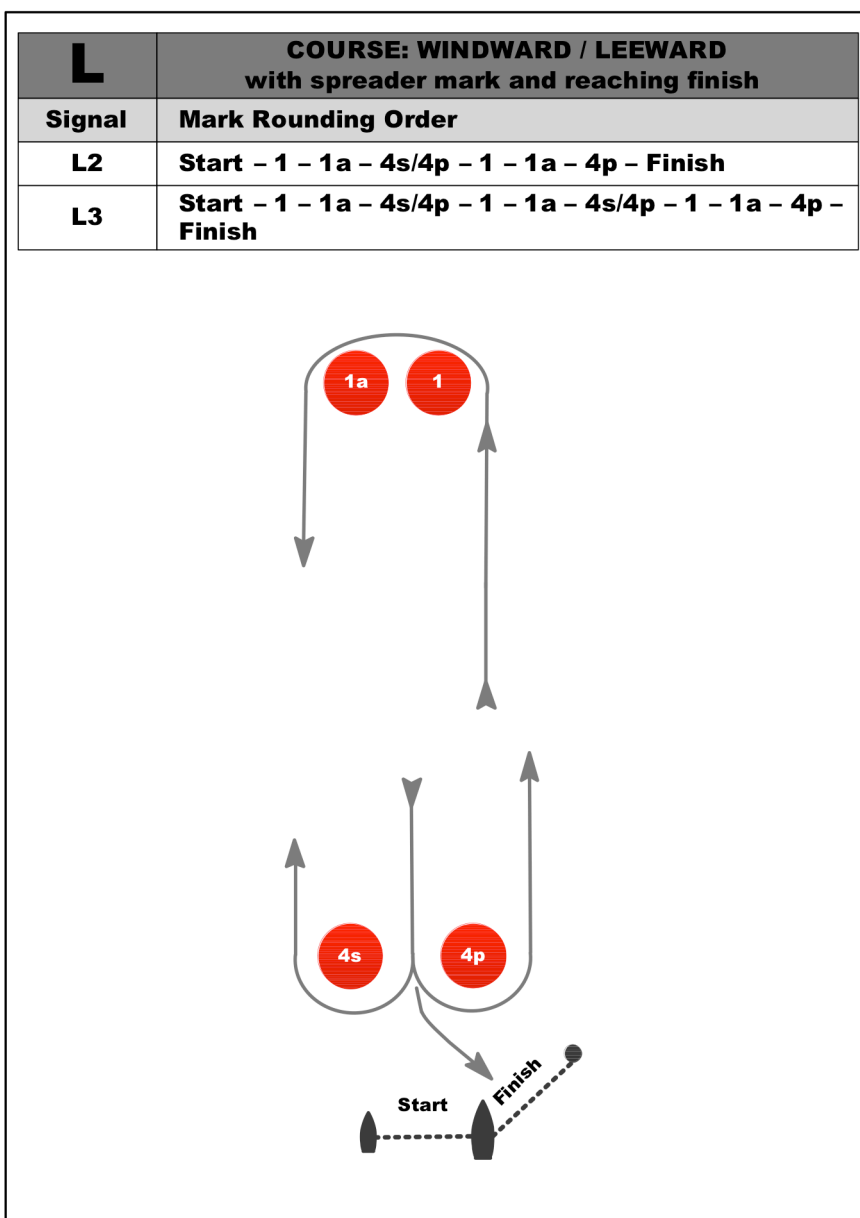
- 32.1 Each participating boat is required to hold insurance cover and in particular to hold adequate insurance against third party claims of at least £3 million per incident or the equivalent.

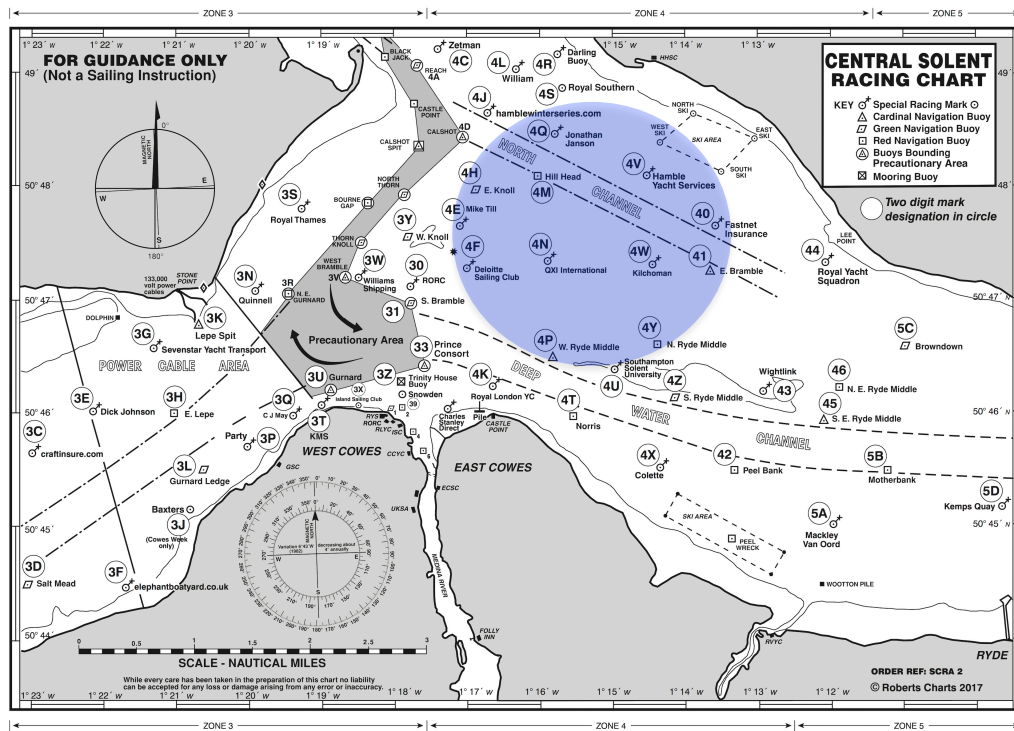
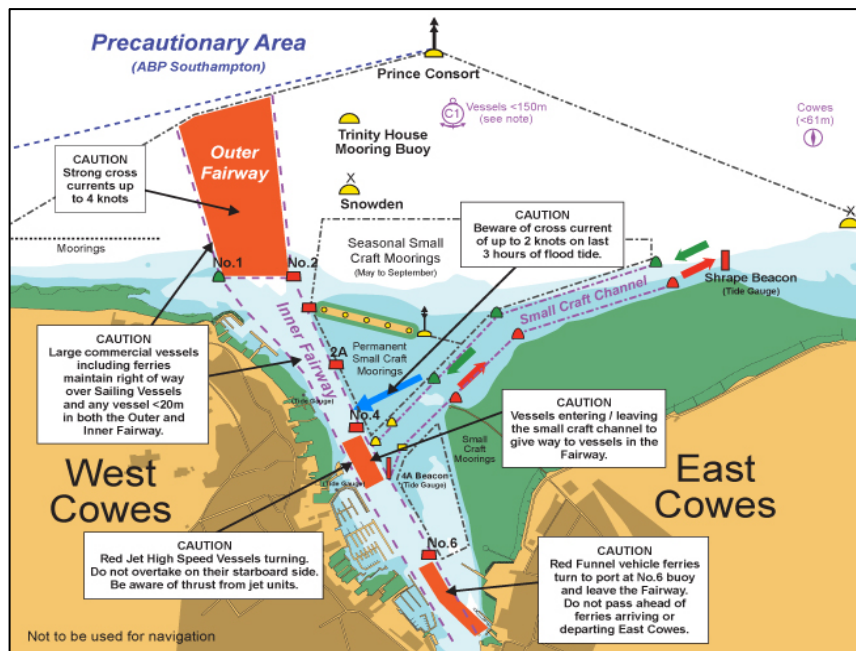
33. DRONES

- 33.1 The SB20 Class Association have contracted with Hannah Cotterell Media to fly an unmanned aerial vehicle ('UAV' or 'drone') on behalf of the class association for the purposes of gathering promotional material and/or race footage. The UAV will be launched from Hamble Point Marina, Cowes Yacht Haven, or in the racing area from a RIB marked 'Media' which shall constitute a race committee vessel.
- 33.2 The drone may fly within 10 metres of competitors. Drones are inherently potentially dangerous and competitors recognize this risk and should avoid any contact with them. They should not try to touch them.

ADDENDUM A





ADDENDUM B**Solent chartlet with two character Solent Mark Codes and expected course area (shown in blue)****ADDENDUM C****ADDENDUM D****PRACTICE RACE**

Boats with a bow number ending in an even number (0, 2, 4, 6 and 8) are requested to sail in the yellow fleet. Boats with a bow number ending in an odd number (1, 3, 5, 7 and 9) are requested to sail in the blue fleet.

CANNON RACE

The Cannon Race will take place after the completion of the Practice Race.

The yellow and blue fleets will start together.

The course will be displayed on the ONB no later than 1200 on Sunday 27 August.

ADDENDUM E**Moving Precautionary Zone****LOCAL NOTICE TO MARINERS No 10 of 2016****Navigation in the Approaches to Cowes: Port of Southampton - Precautionary Area**

07 January 2016

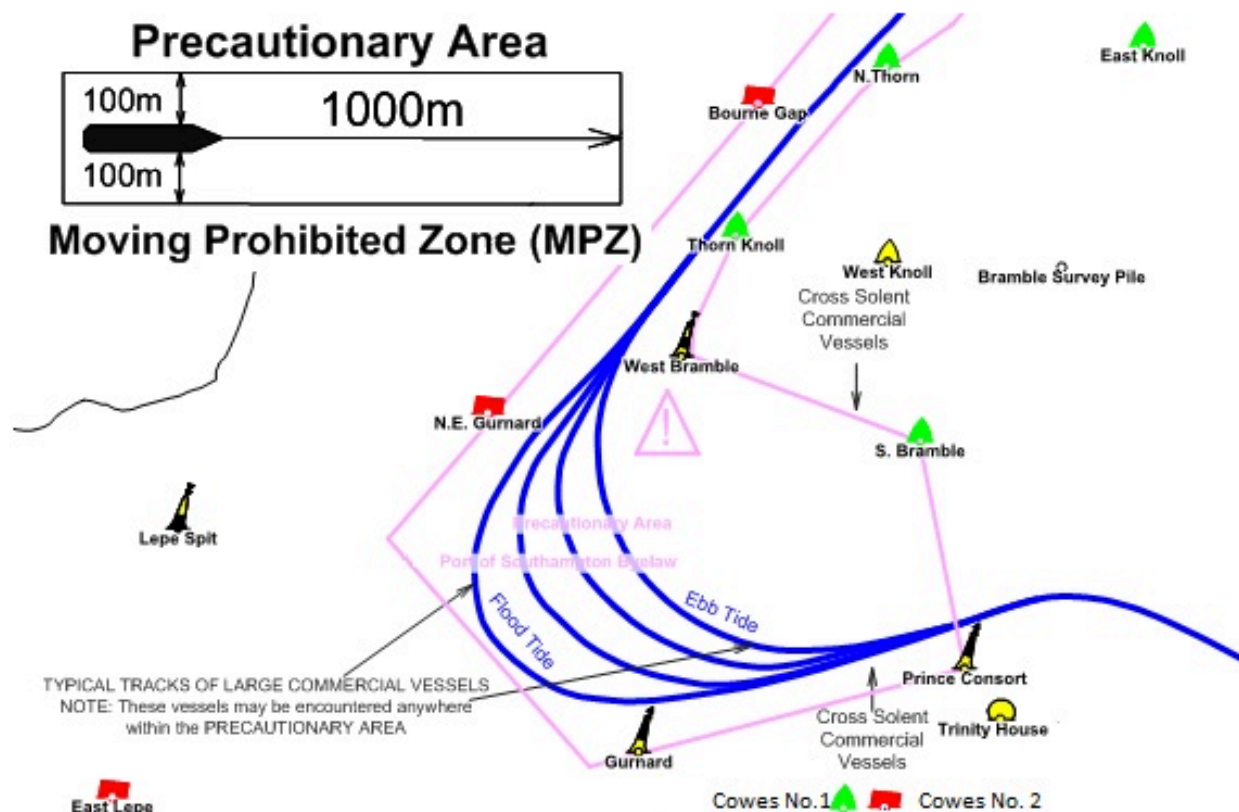
Moving Prohibited Zone (MPZ)

The Southampton Harbour Byelaws enforces the requirement that all vessels over 150 metres in length when navigating in the Precautionary Area referred to in this notice are automatically allocated a Moving Prohibited Zone (MPZ). The MPZ is an area extending 1000 metres ahead and 100 metres either side of any vessel greater than 150 metres within the Precautionary Area.

The Master of a small vessel (less than 20 metres in length or a sailing vessel) shall ensure that his vessel does not enter a Moving Prohibited Zone.

For the purpose of indicating the presence of the Moving Prohibited Zone the Master of any vessel of over 150 metres length shall display on the vessel where it can be best seen, by day: a black cylinder, and by night: 3 all-round red lights in a vertical line.

When operationally possible the Southampton Harbour patrol launch (VHF Call Sign 'SP' Channel 12) will precede these vessels within the 'Precautionary Area' showing, in addition to the normal steaming lights a blue fixed light. The absence of the patrol launch will not invalidate the implementation of the moving prohibited zone.

**Figure 1 – Southampton Precautionary area**